

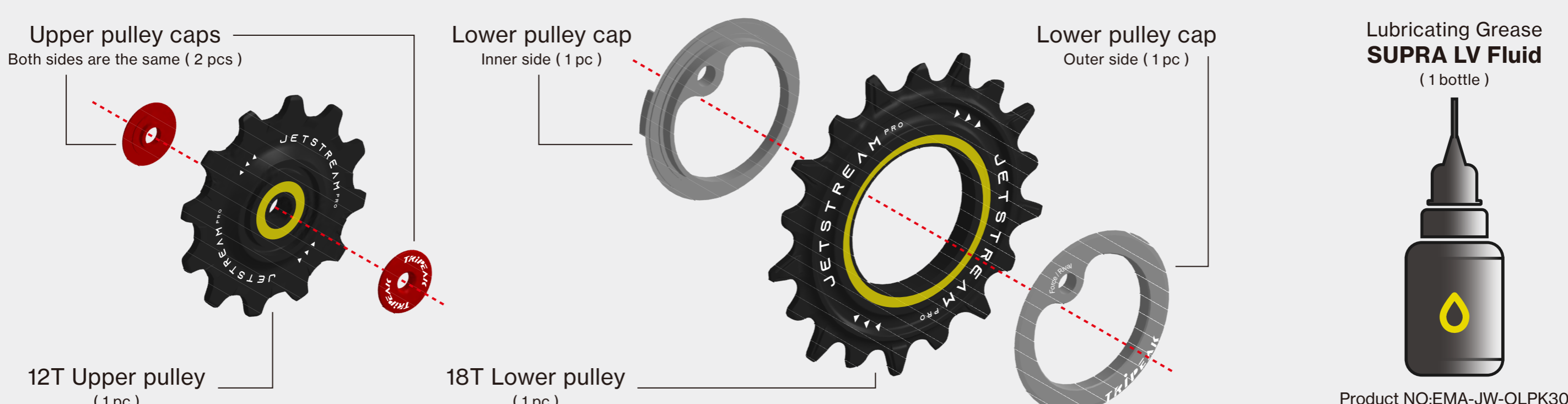
Specification Check

• Compatible Rear Derailleur Models

SRAM AXS 12S FORCE D-1/2

Anatomy

• Before installation, please ensure that the purchased pulley wheel meets the following specifications and includes the following contents.

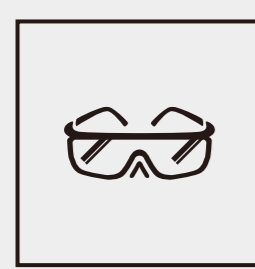


General Safety

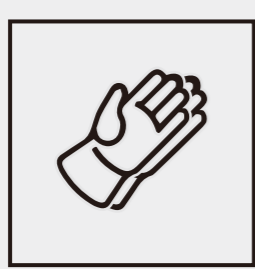
- Please follow the steps in this manual to install AOPW. If you lack the necessary skills or experience, it is recommended to have the installation done by a professional bike shop.
- After applying lubricant, the pulley wheel's free-spinning performance may not be as long-lasting as it was without lubricant. This is normal and does not affect the rotational performance after installation.
- Do not alter this product in any way, as it can cause unseen damage. Any modifications to this product will void the warranty.
- After installation, please recheck that all parts are securely installed and that the operation is smooth and normal, ensuring riding safety.
- When cleaning the AOPW, use only mild soap and water. Never spray with high-pressure water, as this may cause water ingress into the pulley bearings, negatively affecting their rolling lifespan.
- If you have any questions or concerns about this product, Please feel free to contact us. E-mail: info@tripeakbearing.com



Required Tools



Safety Glasses



Gloves



Bike Stand

PROTECTION SUPPLIES



Hex Key Set



Torx Key Set



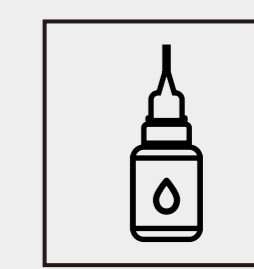
Torque Wrench



Chain Plier



Water-Based Cleaner

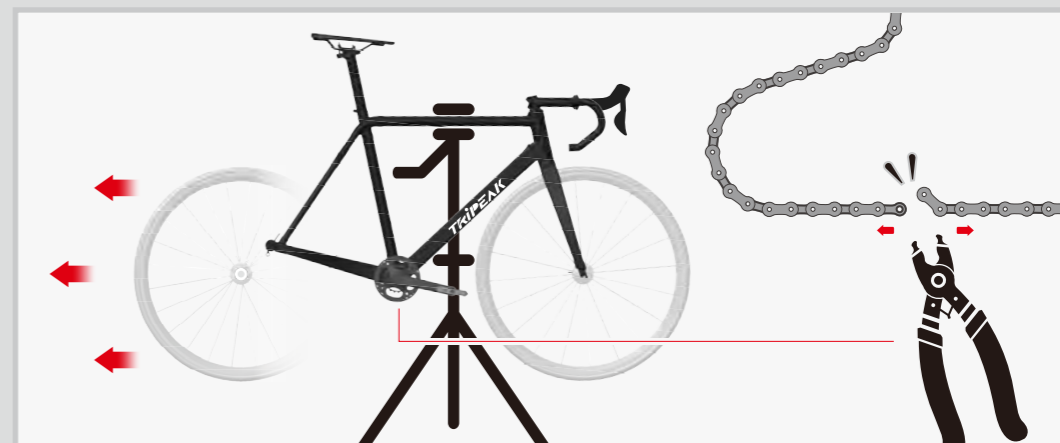


Lubricating Grease

OPERATING TOOLS

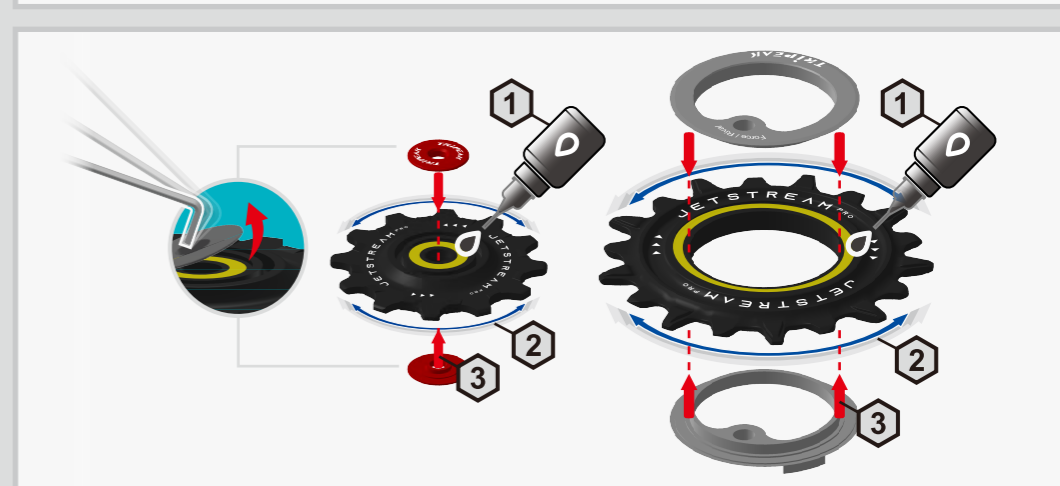
Pulley Wheel Installation

Secure the bike to a repair stand, remove the rear wheel, use a chain plier to remove the chain.

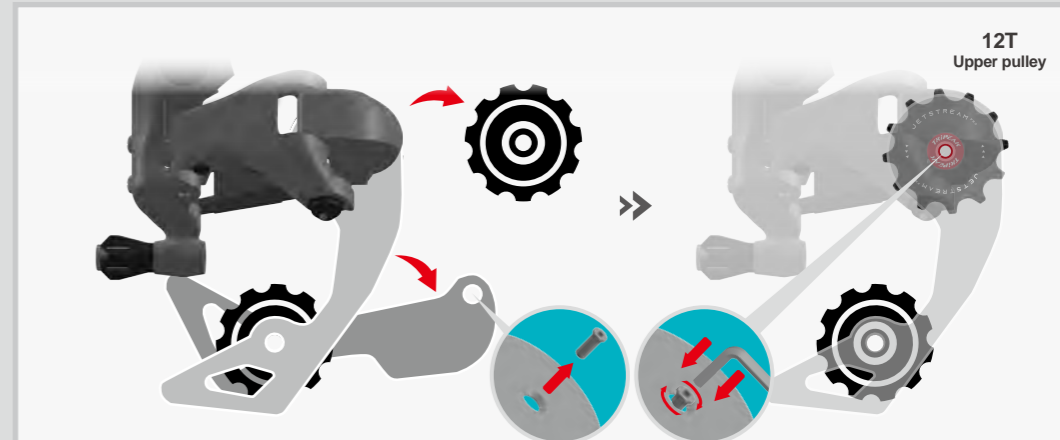


Remove the upper and lower pulley caps of the AOPW. Apply one drop of TRIPEAK SUPRA LV Fluid to the bearing, then rotate it to evenly distribute the lubricant. Reinstall the pulley caps.

⚠ There's no need to remove the seal on the pulley. Our SUPRA LV Fluid lubricant will seep into the bearings through the gaps.

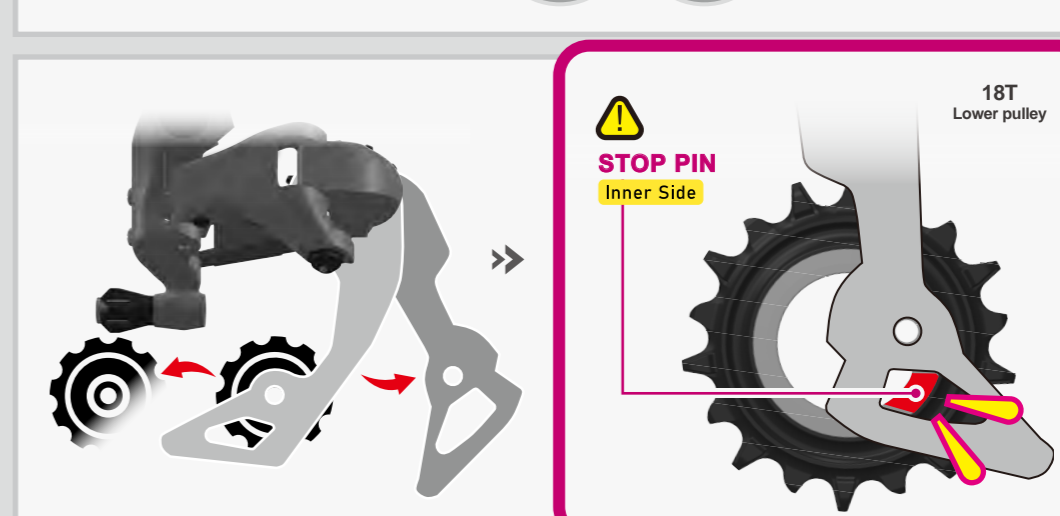


Use a hex or Torx wrench to remove the upper pulley from the original derailleur (choose the tool based on the original screw specifications). Replace it with the AOPW upper pulley (ensure the side with the text is facing outward), and gently tighten the existing upper pulley screw.

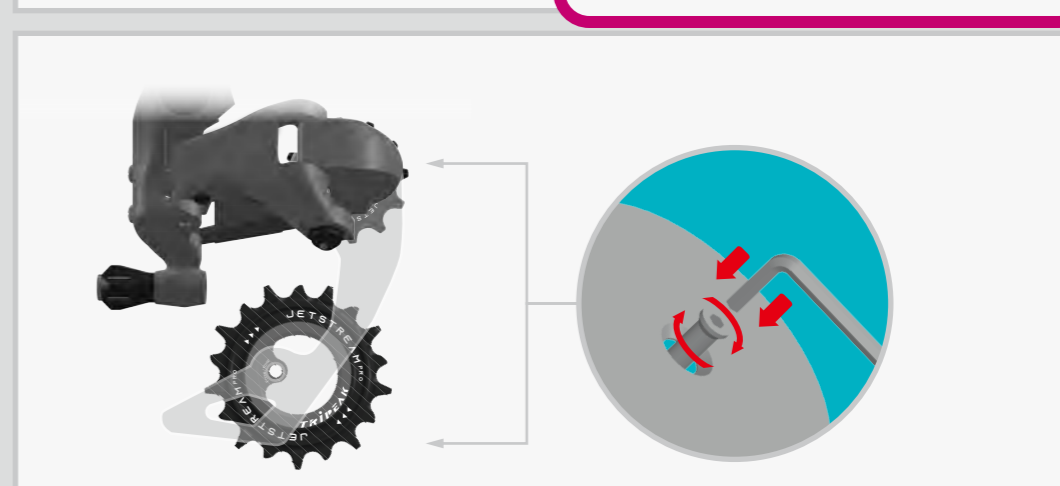


Remove the lower pulley from the original derailleur. When installing the AOPW lower pulley, align the STOP PIN on the pulley cap with the specified position on the cage, as shown in the illustration. Once the lower pulley and cage are properly aligned, reattach the fixing screw.

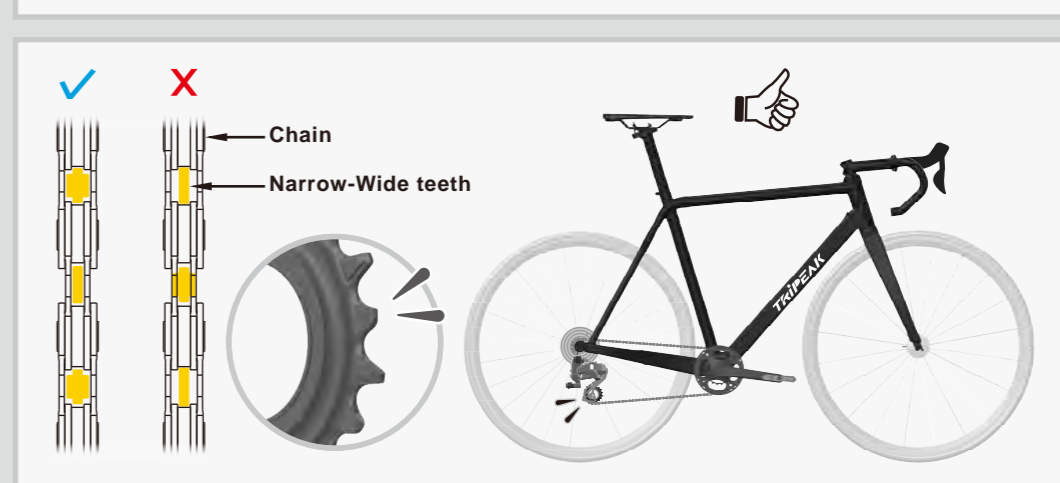
⚠ The installation position of the STOP PIN is on the inner plate.



Tighten the upper and lower AOPW pulley fixing screws to the torque value recommended by the derailleur manufacturer.



Reinstall the chain on the bike, ensuring that the narrow-wide teeth of the pulleys engage precisely with the chain's gaps during installation.



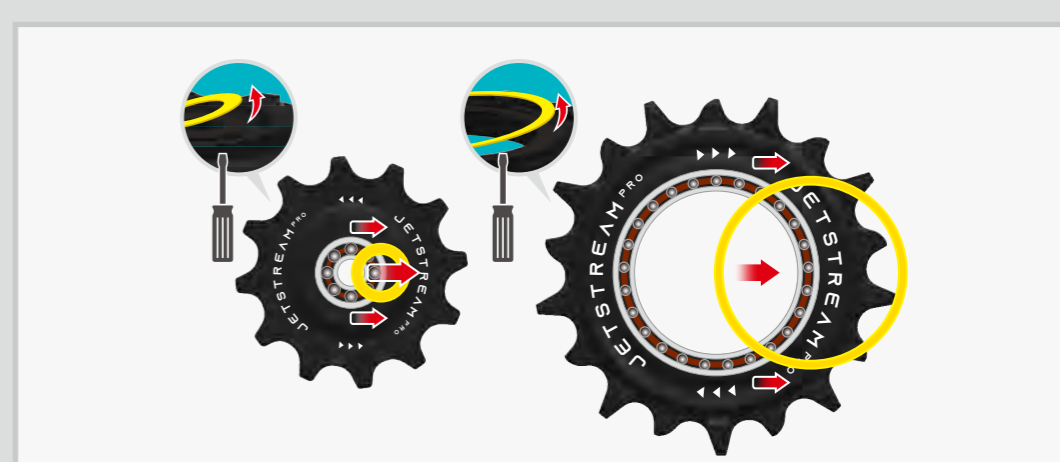
Maintenance

- For maintaining and servicing Jetstream PRO AOPW, Please follow this manual, or have it serviced by a professional bike shop.
- Regular maintenance is recommended every 6 months or after washing your bike. If you ride in harsh conditions (wet, dusty, extreme temperatures, etc.), it is advisable to perform maintenance immediately after your ride.
- The Jetstream PRO AOPW features an innovative design with non-replaceable bearings. If the bearings have irreparable issues, the entire pulley wheel should be replaced.
- Do not use high-pressure water jets to clean the AOPW to avoid water infiltration and bearing damage.
- Regularly check the torque value of the fixing screws and ensure smooth rotation. Never ride with a loose pulley wheel.

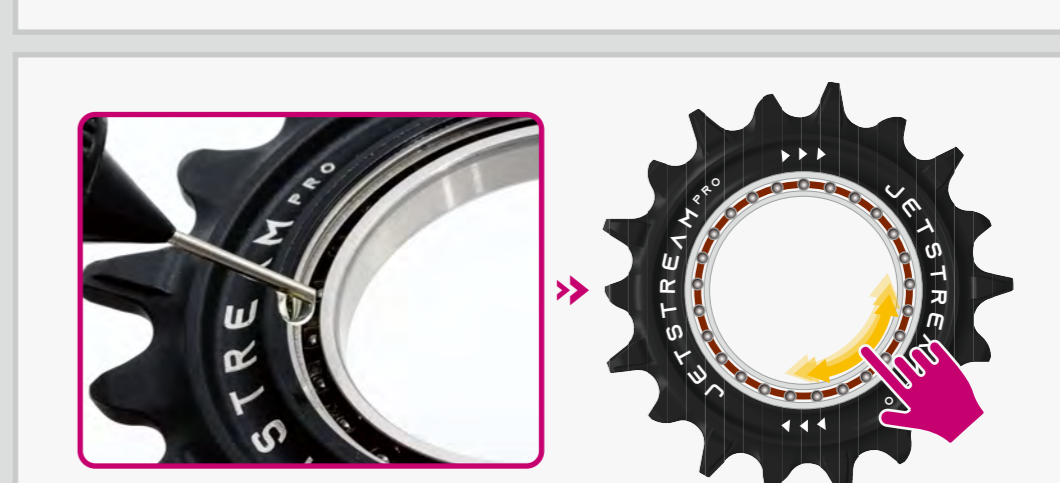
Reapply lubricant to pulley wheel

Use a small tool to gently pry off the seal from the pulley. Clean the bearings thoroughly with an appropriate solvent to remove old lubricant and debris. Allow them to dry completely.

⚠ Be cautious not to damage the seals or the bearings.



Apply one drop of TRIPEAK SUPRA LV Fluid to the bearing, then rotate it to evenly distribute the lubricant.



Carefully press the seal back onto the bearing, ensuring it is installed properly and securely.

After reassembly, ensure the bearings move smoothly and freely.

